

WASEMA INC. 2020 ANNUAL



Women's Association South East Melbourne Australia

**WASEMA Inc.
PO Box 140
31 Douglas Street Noble Park- Vic 3174
Email: wasema.inc.board@gmail.com
ABN:81 152 282 818**



**WASEMA FRIENDSHIP CAFE WOMEN'S DAY
CELEBRATION AT NORTH DANDENONG NEIGHBOURHOOD
HOUSE**

WELCOME

WOMEN GROWTH AND DEVELOPMENT

WOMEN OUT OF ISOLATION

LISTENING TO WOMEN

SOCIAL INCLUSION

UNDERSTANDING



a place of welcome and friendship

WOMEN

UNITY

STRENGTH

SHARING

TRUST

DIVERSITY

BELONGING

SUPPORT

INTEGRITY

HONESTY

EMPOWERING

RESPECT

COMMUNITY

VOLUNTEERING

FRIENDSHIP



WASEMA respectfully acknowledge the traditions and custodians of the lands and waters of Victoria.

We pay our respects to past, present and future elders and leaders in the community

Contents

| | |
|--|----|
| Our Vision | 4 |
| Our Mission | 4 |
| Our Values | 4 |
| Purposes | 5 |
| A Word from The Honourable Jason Wood Assistant Minister for Customs, Community Safety and Multicultural Affairs | 6 |
| BACKGROUND HISTORY | 7 |
| Today WASEMA Inc. is comprised of: | 8 |
| WASEMA Inc. Board Members | 9 |
| WASEMA Inc. MUSTER Grant Committee | 10 |
| WASEMA Inc. Staff Members | 11 |
| WASEMA Inc. Volunteers | 12 |
| Our Community and Stakeholders | 13 |
| Chairperson's Report | 14 |
| Coordinator's Report | 15 |
| Financial Reports | 16 |
| Independent Auditor's Report | 18 |
| WASEMA's NUMBERS | 26 |
| WASEMA Inc. ACTIVITIES 2019 - 2020 | 27 |
| WASEMA FRIENDSHIP CAFECity of Greater Dandenong | 27 |
| Springvale WASEMA Friendship Café | 28 |
| North Dandenong WASEMA Friendship Café | 29 |
| Wellsprings WASEMA Friendship Café | 30 |
| City of Casey | 31 |
| Endeavour Hills WASEMA Friendship Café | 31 |
| Strathaird WASEMA Friendship Café | 32 |
| Shire of Cardinia | 33 |
| Bridgewood WASEMA Friendship Café (Our Place) Primary School | 33 |
| Cockatoo WASEMA Friendship Café | 34 |
| Emerald WASEMA Friendship Café | 35 |
| WASEMA Inc. Monthly Networking Meetings | 36 |
| WASEMA Inc. Network Participation | 37 |
| WASEMA Inc. Advisory Participation & Memberships | 38 |
| WASEMA Inc. Specialized Training | 39 |
| WASEMA Inc. Family Violence Advisory Committee | 41 |

WASEMA Inc. Training for the Afghan Community _____ 42

WASEMA Inc. Participation in Community Consultations _____ 43

City of Greater Dandenong _____ 43

City of Casey _____ 43

Shire of Cardinia _____ 43

WASEMA Inc. Advocacy _____ 44

WASEMA Inc. Placement Partnerships _____ 44

WASEMA Inc. Participation in Events, Exhibitions, Expos, Festivals & Forums _____ 45

WASEMA Inc. Information Sessions _____ 46

Training and Workshops (Third Party) _____ 47

WASEMA Inc. in the Community _____ 49

Looking Ahead _____ 50

Our Vision

WASEMA envisions an Australia where:

Women are confident and able to take their equal place in the social, cultural, economic, educational and political life.

Our Mission

Is to enable neighbourhoods where women make friends, feel a sense of belonging, and meet family, work and security needs.

For women to connect across divides of culture, education, ability, age and to be linked in friendship and support.

For families and communities to benefit from the wellbeing, strength, and leadership of women.

Our Values

- ❖ Openly Share Our Knowledge and Networks
- ❖ Integrity/Honesty
- ❖ Dedication to Helping Women
- ❖ Friendship
- ❖ Respect Diversity
- ❖ Commitment
- ❖ Responsibility/Accountability
- ❖ Cooperation


Purpose

The Association is established to be a charity whose purpose is to promote social or public welfare by supporting and advocating for Victorian women of multicultural backgrounds.

Without limiting the ways the Association can pursue this purpose, the Association will:

- ❖ Establish and run Women's Friendship Cafes to provide culturally appropriate education, mentoring, and well-being opportunities for women across Victoria;
- ❖ Provide information about women's issues and opportunities to engage in community programs, including in collaboration with other women's welfare agencies and service;
- ❖ Provide a safe space for women to work together on common projects, grants, events and activities;
- ❖ Advocate around issues relevant to the welfare of women of multicultural backgrounds.
- ❖ Provide a network for women's groups to share activities, experiences and challenges

A Word from The Honourable Jason Wood Assistant Minister for Customs, Community Safety and Multicultural Affairs



To whom it may concern,

WASEMA provides an amazing service to the multicultural communities here in the South East. Be it the physical or online friendship cafes, the networking events, the mentoring programs, the many training opportunities, WASEMA provides an indispensable service to all the local multicultural communities.


Furthermore, I must state how brilliantly it has been led by community leader Nika Suwarsih. Nika has been a volunteer for WASEMA since 2015 before starting to formally work with them in 2019. Nika has been very active in community volunteering and helping realise the potential of the community.

Even during the Coronavirus, Nika has made her events available online to make sure that even during a pandemic, she can continue to help the people of La Trobe.

I commend her on her effective use of Federal funding to aid the community through the WASEMA friendship café in Dandenong North and the North Dandenong Neighbourhood house.

She is truly an extremely valuable member of our community.

Yours sincerely



Hon Jason Wood MP
Federal Member for La Trobe
Assistant Minister for Customs, Community Safety and Multicultural Affairs

THE HONOURABLE JASON WOOD

ASSISTANT MINISTER FOR CUSTOMS, COMMUNITY
SAFETY AND MULTICULTURAL AFFAIRS

BACKGROUND HISTORY

Initially WASEMA functioned as a network of women's groups across the South East Suburbs of Melbourne, Victoria. We have come together as a network since 2015.

At first the following Women's Friendship Cafes joined our network:

- ❖ Multicultural Women's Friendship Network
- ❖ Thai Women's Friendship Network
- ❖ Asian Friendship Association
- ❖ Cambodian Women's Friendship Association
- ❖ Thai Information and Welfare Association
- ❖ Burmese Women's Alliance
- ❖ Frankston Women's Friendship Café
- ❖ Daughters of Eve Friendship Café (Frankston)
- ❖ Indonesian Women's Friendship Network (IWFN)
- ❖ Indonesian Society of Victoria (PERWIRA)
- ❖ Multicultural Playgroup Victoria (MPV)
- ❖ Multicultural Muslim Women's Network
- ❖ Australian African Women's Health Advisory Group
- ❖ Victoria Australia Samoa Seniors Inc (VASSI)
- ❖ Cook Islander Women's Alliance

Each group managed their own activities, grants and projects, meeting each month to share, collaborate, hear guest speakers, and support each other.

This period of collaboration with a range of multicultural women's groups was the precursor for WASEMA (Women's Association South East Melbourne Australia) Inc.

IN 2019 we acquired a major grant from the Department of Social Services to establish nine WASEMA Friendship Cafes within the City of Greater Dandenong, Casey and the Shire of Cardinia.

In order to fulfill the legal and governance requirements to manage this grant, WASEMA became incorporated on 28th July 2019 and a board was elected.

The Board established policies and procedures, procured appropriate insurance, bank accounts and the necessary legal requirements were put in place to secure good governance for the association.

Today WASEMA Inc. is comprised of:



FIGURE 1 WASEMA LEADERS

- ❖ 93 Registered Members
- ❖ 66 Volunteers
- ❖ 11 Staff Members
- ❖ 6 MUSTER Grant Committee Members
- ❖ 5 Board Members



FIGURE 1 WASEMA INC MULTICULTURAL CELEBRATION

WASEMA Inc. Board Members

WASEMA Inc Board members oversees the governance side of WASEMA activities.



Marcia Cristina de Souza
Taylor
Chairperson



Sarita Kulkarni
Vice-Chairperson



Vivienne
Fernandes
Secretary



Nabila Marzouk
Board Member



Jackie Okiya
Board Member

WASEMA Inc. MUSTER Grant Committee

WASEMA MUSTER Grant committee oversees WASEMA Friendship Cafes.



Nabila Marzouk
Muster Grant Chair



Sura Abu Alassal
Muster Grant Vice-Chair



Sarita Kulkarni
Muster Grant
Project Manager



Vivienne Fernandes
Muster Grant Secretary



Jackie Okiya
Muster Grant Member



Malay So
Muster Grant Member



Maria Agelonitis
Muster Grant Advisor
WASEMA Inc Coordinator

WASEMA Inc. Staff Members

WASEMA staff members working in the WASEMA Friendship Cafes, administration and financial tasks.



Nga Hosking
Project Officer



Ann Pathmasiri
Bookkeeper



Alveera Mathias
Admin Officer



Marta Slawuta
Community Worker Cockatoo



Sahar Aghazadeh
Community Worker Springvale



Shazia Khanum
Community Worker Dandenong



Nika Suwarsih
Community Worker North Dandenong



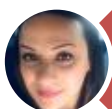
Sarah Romp
Community Worker Endeavour Hills



Milana Mansoor
Community Worker Narre Warren



Susi Tevaseu
Community Worker Officer



Saraf Mahiat
Community Worker Emerald

WASEMA Inc. Volunteers

WASEMA 's volunteers make our work possible. Volunteers are at the heart of our work. they are closely involved with the cafes. and the work WASEMA undertakes.

| | | | | | |
|-------------------|----------------------|-----------------------|-------------------------|----------------------|------------------|
| Malay So | Sharon Mulyawar Daya | Panja Murugiah | Shanta Flinders | Santi Whiteside | Indah Dwitari |
| Sophie Page | Puteri Sharina | Michelle James | Stephen Yin | Yulia Hadi | Wida Chandler |
| Yohanes Hendratno | Cecilia Lopez | Jaryami HarrellShanta | Renuka Balaji | Nuwanthi Palihakkara | Mojgan Fazeli |
| Kubra Bahram | Shuaib Salman | Alia Soomro | Imara J. Fernando | Anita Rith | Alice Thong |
| Lili Doung | Shanta Flinders | Soung Ly | Humaira Bibi | Hacer Topal | Elaine Smith |
| Sarita Kulkarni | Jaryami Harrell | Ketut Sri Handayani | Snehal Kulkarni | Nika Suwarsih | Lisa Kritikias |
| Anna Crestani | Sarah Romp | Shanta Flinders | Soung Ly | Liseby Lapierre | Fariba Moladi |
| Thanuja Herath | Ateya Dastagirzada | Tayeba Formoly | Subhaskiri Weerasooriya | Humaira Bibi | Fatima Khaliq |
| Hacer Topal | Hina Paurangi | Khadija Kharimi | Robina Dammar | Thilini Attanayaka | Anika Baheti |
| Kubra Bahram | Rose Viogtt | Jolene Stewart | Monalisa Hainsworth | Madhura Ghodke | Jan Joyce |
| Qudsia Zahid | Maha Yahya | Amuor Aman | Khalida Nazrebi | Thilini Attanayaka | Maria Agelonitis |

Our Community and Stakeholders

| | | | | | |
|--|-------------------------------------|---|--------------------------------|--------------------------------------|---|
| Women Identifying As Having A Disability | Women Fleeing Family Violence | Women Residing In a Rural or Remote Area | Disadvantaged Women | women from Diverse Backgrounds | Women Identifying as Aboriginal or Torres Strait Islander |
| Women Seeking Volunteer Opportunities | Isolated Women | Women with Diverse Abilities | Long Term Residents | New Arrivals | Persons Who Identifies as a Woman |
| Vulnerable Women | Women on Humanitarian Visa | Women | Springvale Neighbourhood House | Wellsprings for Women | Straithaird Childre's Centre |
| Bridgewood Primary School | North Dandenong Neighbourhood House | Cocketoo Community House | Emerald Community House | Endeavour Hills Neighbourhood Centre | Ciy of Greater Dandenong |
| SMRC | Brotherhood of St Lawrence | Victoria Police Southern Metro Region | Australina red Cross | Jolene Stewart | Elaine Smith |
| Maria Agelonitis | Global Sisiters | Springvale Learning and Activities Centre | AUS Career | Shire of Cardinia | City of Casey |
| Victoria Multicultural Comiccion | WHISE | The Honourable Mr Jason Wood MP | Sineths Sareth Sar | Baker & Makenzie | RST Consulting |
| Bright Care | Selandra Community Hub | YMCA | Department od Social Services | Uniting | Monash University Forced Marriage Research |
| Multicultural Centre for Women's health | Enlivern Enhancing Social Health | Perwira Inc | Migrants Workers Centre | La Trobe Community Services | SNA Studio |
| | The Honourable Gabriel Williams MP | Justice Connect | Matthew Kirwain) | | |

Chairperson's Report

As WASEMA Chairperson I welcome our members, participants, volunteers, staff members benefactors and stakeholders who make our work possible.

I would like to express WASEMA's Board gratitude and appreciation towards all our friends in the community, for their efforts and support in our first year in operation as WASEMA Inc.

A big thank you must also go to our Donors Reclink, Bright Care (Sura Abul Alassal), RST Consulting (Sineth Sareth Sar) Employment Essential Services and Baker & McKenzie. Our dedicated supporters, Elaine Smith, Rovel Shackelford, Jolene Stewart and Maria Agelonitis. We thank the managers and staff at the Neighbourhood Houses who host our Friendship Cafes, our board and volunteers who have worked tirelessly to make WASEMA Friendships Cafes, programs and activities a reality. I also would like to extend our gratitude to The Honourable Jason Wood Assistant Minister for Customs, Community Safety and Multicultural Affairs, the local councils of Greater Dandenong, Casey and Cardinia, Justice Connect, Department of Social Services, The Honourable Gabrielle Williams MP and Councillor Matthew Kirwain for your continuous support.

This last year was an exciting and challenging year for WASEMA, we started our journey up 3 cafes in August 2019 with Board members and a volunteer workforce. Then in October we received the first MUSTER Grant instalment allowing us to engage a number of community development workers to run the cafes and manage the project with us.

Our efforts were well received in the community; however, the beginning of 2020 saw our young organisation face one of the most challenging times in recent history with the COVID-19 pandemic shifting the world's dynamics around us.

WASEMA rose to the challenge by adapting and exercising a level of flexibility that saw us quickly respond to the environmental changes that came with the pandemic and subsequent isolation and lock down period that followed.

WASEMA created a hybrid model that saw our participants numbers soar and our reach in the community expand to accommodate the requirements caused by isolation. We now run 8 WASEMA Friendship Cafes, with 2,769 women attending in our first year. WASEMA hosted 1,309 sessions and a further 624 women received support from services providers in the regions we operate.

The future will hold a number of challenges for WASEMA, but with dedication and resilience of Board, Committees, Member and with the help of our supporters and benefactors WASEMA will navigate the tide with the same optimism and desire to do the best to the women and families we serve and represent.



Marcia Cristina de Souza Taylor

WASEMA Inc Chairperson

Coordinator's Report

Euphemistically, the Hummingbird effect is about creating innovation; and with this concept, so was born WASEMA - Women's Association of South East Melbourne Australia.

WASEMA began as an informal network at the end of December 2015, where twenty women's groups came together in collaboration, working collectively to achieve each individual group's particular aims and goals.

Through trust and common vision, our informal network took the decision to incorporate on 28th July 2019, so as to be able to deliver services and activities more effectively in the communities that our women's and community groups represent.

WASEMA's inception came at a time of challenge through which new and novel possibilities were to be serendipitously discovered; namely that of establishing the nine Hybrid WASEMA Friendship Cafés which operate exclusively for women within the City of Greater Dandenong, City of Casey and Shire of Cardinia and which have undergone astonishing change due to COVID-19. The introduction of virtual platforms and technology to our plans, have opened unlimited participation possibilities for over six hundred women who would have been otherwise excluded and isolated due to individual circumstances.

WASEMA leveraging the power of combination rather than isolation; sought to find partnerships which fostered diversity of thought, to find breakthroughs for issues such as; isolation, exclusion, family violence, homelessness in women over 55 years of age, knowledge and skill building and more, for participants within South East Melbourne.

WASEMA being flexible, adaptable and agile, responded to changing participant needs and government priorities. Fully understanding that factors such as social and environmental pressures impact social isolation and that they play as important risk factors for mental health, physical health, safety and wellbeing.

WASEMA implements social networks and community connection to help people recover and improve outcomes, and for this reason, plans to expand the Hybrid WASEMA Friendship Cafes in the area of Social Prescribing which is the practice where health professionals, including GPs, have the resources and infrastructure to link patients with social groups and services, in a bid to address the social determinants contributing to poor health and to stave off the epidemic of loneliness and social isolation.

Respectfully,

Maria Agelonitis

WASEMA Inc Coordinator

Financial Reports

Sources of Income: Grants, Donations, Sponsorship and Bank Interest - \$158,446.15

Total Expenses for 2020 - 2021: \$114,651.49

I am honoured to be presenting the 2019-2020 Financial Report for Women's Association South East Melbourne Australia (WASEMA Inc.). We acknowledge the support of our stakeholders, partners and our funding bodies who enabled us to provide our community with programs and services. With their support to WASEMA now and in the future, the programs and services will continually grow, flourish, develop and sustain.

I am proud to announce the first financial year report for WASEMA. Our income has been \$158,446.15 and the expenses were in line with the funds gathered from sources. The audited financials are showing an overall surplus of \$43,794.66 at the end of this financial year. As this is WASEMA's first year of operation, we are unable to provide comparison figures, but are positive that the organisation's activities will continue to develop and grow in leaps and bounds.

WASEMA continues to provide increased support to the community of City of Greater Dandenong, City of Casey and Shire of Cardinia. WASEMA's work will continue to grow and develop with our Virtual online programs. We are confident of that, as planning is in place for the new systems to be implemented through into 2020, 2021 and beyond.

Under the guidance of the Board and Committee, WASEMA has been working on new internal systems to refine the financial reporting to the Committee of Governance and the annual reporting to the financial auditors. The systems we have in place have enabled us to report on our compliance obligations, legislations and meet our funding requirement. The Board and committee have strived to reach a standard by working tirelessly throughout the year. The Auditor's Report along with the Annual Report shows the positive impact that WASEMA has had in the community in one year.

WASEMA continues to invest in new governance, management, program and infrastructure initiatives to enable it to continue to deliver much needed services to the community that it serves in the City of Greater Dandenong, the City of Casey, and the Shire of Cardinia, and will progress further into other councils of South East Melbourne and beyond. WASEMA is well supported by an appropriate structure and governance that will see it serving the community in improved ways into the future.

We would like to thank our funding bodies, donors, community partners, staff and volunteers for their continued commitment to the organisation and we look forward to serving the community in the year ahead.



Sarita Kulkarni WASEMA Inc Vice - Chair



Women's Association South East Melbourne Australia

WASEMA Inc.
PO Box 140
31 Douglas Street Noble Park- Vic 3174
Email: wasema.inc.board@gmail.com
ABN:81 152 282 818

**Women's Association South East Melbourne Australia (WASEMA) Inc
Statement by Members of the Board**

The Financial statements cover Women's Association South East Melbourne Australia Inc, as an individual entity, is a not for profit association, incorporated in Victoria under the *Associations Incorporation Reform Act 2012*. The financial statements are appropriate to meet the needs of its members.

There are no comparatives as this is the first report.

The 2020 Financial Report of WASEMA Inc. for the year ended 30 June 2020, is based on the financial performance and cash flows for the year.

An independent Audit was conducted by KJ Audit & Accounting Pty Ltd. A copy of that report along with their independent declaration is included.

This statement is made in accordance with a resolution of the Committee on 22 July 2020 on behalf of the Committee by:

President: Marcia Cristina de Souza Taylor

Secretary: Vivienne Fernandes

Dated: 22nd July 2020

INDEPENDENT AUDITOR'S REPORT

To the Members of Women's Association South East Melbourne Australia Inc

Opinion

We have audited the financial report of Women's Association South East Melbourne Australia Inc (the association), which comprises the balance sheet as at 30 June 2020, and the income statement, statement of changes in equity and cash flow statement for the year then ended, and notes to the financial statements, including a summary of significant accounting policies, and the declaration by the executive committee.

In our opinion, the accompanying financial report of Women's Association South East Melbourne Australia Inc is in accordance with the *Associations Incorporation Reform Act 2012*, including:

- a. giving a true and fair view of the association's financial position as at 30 June 2020 and its performance for the year ended on that date; and
- b. complying with Australian Accounting Standards to the extent described in Note 1 and the *Associations Incorporation Reform Act 2012*.

Basis for Opinion

We conducted our audit in accordance with Australian Auditing Standards. Our responsibilities under those standards are further described in the Auditor's Responsibilities for the Audit of the Financial Report section of our report. We are independent of the Association in accordance with the auditor independence requirements of the *Associations Incorporation Reform Act 2012* and the ethical requirements of the Accounting Professional and Ethical Standards Board's APES 110 *Code of Ethics for Professional Accountants* (the Code) that are relevant to our audit of the financial report in Australia. We have also fulfilled our other ethical responsibilities in accordance with the Code.

We believe that the audit evidence we have obtained is sufficient and appropriate to provide a basis for our opinion.

Emphasis of Matter – Basis of Accounting

We draw attention to Note 1 to the financial report, which describes the basis of accounting. The financial report has been prepared for the purpose of fulfilling the executive committee's financial reporting responsibilities under the *Associations Incorporation Reform Act 2012*. As a result, the financial report may not be suitable for another purpose. Our opinion is not modified in respect of this matter.

Other Information

The executive committee is responsible for the other information. The other information obtained at the date of this auditor's report is information included in the annual report for the year ended 30 June 2020 but does not include the financial report and our auditor's report thereon.

Our opinion on the financial report does not cover the other information and accordingly we do not express any form of assurance conclusion thereon.

In connection with our audit of the financial report, our responsibility is to read the other information and, in doing so, consider whether the other information is materially inconsistent

with the financial report or our knowledge obtained in the audit, or otherwise appears to be materially misstated.

If, based on the work we have performed on the other information obtained prior to the date of this auditor's report, we conclude that there is a material misstatement of this other information, we are required to report that fact. We have nothing to report in this regard.

Responsibilities of the Executive Committee for the Financial Report

The executive committee of the association are responsible for the preparation of the financial report that gives a true and fair view and have determined that the basis of preparation described in Note 1 to the financial report is appropriate to meet the requirements of the *Associations Incorporation Reform Act 2012* and is appropriate to meet the needs of the members. The executive committee's responsibility also includes such internal control as the executive committee determine is necessary to enable the preparation of a financial report that gives a true and fair view and is free from material misstatement, whether due to fraud or error.

In preparing the financial report, the executive committee are responsible for assessing the Association's ability to continue as a going concern, disclosing, as applicable, matters relating to going concern and using the going concern basis of accounting unless the executive committee members either intend to liquidate the Association or to cease operations, or have no realistic alternative but to do so.

Auditor's Responsibilities for the Audit of the Financial Report

Our objectives are to obtain reasonable assurance about whether the financial report as a whole is free from material misstatement, whether due to fraud or error, and to issue an auditor's report that includes our opinion. Reasonable assurance is a high level of assurance but is not a guarantee that an audit conducted in accordance with the Australian Auditing Standards will always detect a material misstatement when it exists. Misstatements can arise from fraud or error and are considered material if, individually or in the aggregate, they could reasonably be expected to influence the economic decisions of users taken on the basis of this financial report.

As part of an audit in accordance with the Australian Auditing Standards, we exercise professional judgment and maintain professional scepticism throughout the audit. We also:

- Identify and assess the risks of material misstatement of the financial report, whether due to fraud or error, design and perform audit procedures responsive to those risks, and obtain audit evidence that is sufficient and appropriate to provide a basis for our opinion. The risk of not detecting a material misstatement resulting from fraud is higher than for one resulting from error, as fraud may involve collusion, forgery, intentional omissions, misrepresentations, or the override of internal control.
- Obtain an understanding of internal control relevant to the audit in order to design audit procedures that are appropriate in the circumstances, but not for the purpose of expressing an opinion on the effectiveness of the association's internal control.
- Evaluate the appropriateness of accounting policies used and the reasonableness of accounting estimates and related disclosures made by the executive committee.

- Conclude on the appropriateness of the executive committee's use of the going concern basis of accounting and, based on the audit evidence obtained, whether a material uncertainty exists related to events or conditions that may cast significant doubt on the association's ability to continue as a going concern. If we conclude that a material uncertainty exists, we are required to draw attention in our auditor's report to the related disclosures in the financial report or, if such disclosures are inadequate, to modify our opinion. Our conclusions are based on the audit evidence obtained up to the date of our auditor's report. However, future events or conditions may cause the Association to cease to continue as a going concern.
- Evaluate the overall presentation, structure and content of the financial report, including the disclosures, and whether the financial report represents the underlying transactions and events in a manner that achieves fair presentation.

We communicate with the executive committee regarding, among other matters, the planned scope and timing of the audit and significant audit findings, including any significant deficiencies in internal control that we identify during our audit.

K. Joachim

KAVITHA JOACHIM
RCA 495489
DIRECTOR



Women's Association South East Melbourne Australia

WASEMA Inc.
PO Box 140
31 Douglas Street Noble Park- Vic 3174
Email: wasema.inc.board@gmail.com
ABN:81 152 282 818

Statement of Cashflow

For the year ended 30th June 2020

| | | <u>2019-20</u> |
|---------------------------------------|-----------------|-------------------------|
| SOURCE OF FUNDS | | |
| Net surplus from operations | | 43,794.66 |
| Add: Non-cash Expenses | | |
| Depreciation | | 8,537.36 |
| Total Source of Funds | | 52,332.02 |
| APPLICATION OF FUNDS | | |
| <u>Less:</u> | | |
| Purchase of assets | 10,978.82 | |
| GST Receivable | <u>378.83</u> | |
| | | (\$11,357.65) |
| <u>Add:</u> | | |
| Accounts Payable | 25,990.22 | |
| Advances received | <u>4,000.00</u> | |
| | | 29,990.22 |
| Total Application of Funds | | <u>18,632.57</u> |
| Increase in Cash at Bank | | 70,964.59 |
| Cash at Bank on 1st July 2019 | | - |
| Cash at Bank on 30th June 2020 | | <u>70,964.59</u> |



Women's Association South East Melbourne Australia

WASEMA Inc.
PO Box 140
31 Douglas Street Noble Park- Vic 3174
Email: wasema.inc.board@gmail.com
ABN:81 152 282 818

Statement of Financial Position

As at 30th June 2020

| | <u>2019-20</u> |
|-----------------------------------|---------------------------|
| ASSETS | |
| <u>Current Assets</u> | |
| Cash at Bank | |
| Operating Account | \$5,567.89 |
| Muster Grant Bank Account | \$64,503.80 |
| GST Bank Account | \$892.90 |
| Total Current Assets | \$70,964.59 |
| <u>Fixed Assets</u> | |
| Office Equipment At Cost | \$2,348.73 |
| Accum. Depr. Office Equipment | (\$2,348.73) |
| | \$0.00 |
| Computers At Cost | \$8,630.09 |
| Accum. Depr. Computers | (\$6,188.63) |
| | \$2,441.46 |
| Total Assets | \$73,406.05 |
| LIABILITIES | |
| <u>Current Liabilities</u> | |
| GST Collected | \$485.35 |
| GST Paid | (\$864.18) |
| | (\$378.83) |
| Trade Creditors | \$3,915.22 |
| Accrued Expenses | \$22,075.00 |
| Grants received in advance | \$4,000.00 |
| Total Other Current Liabilities | |
| Total Liabilities | \$29,611.39 |
| NET ASSETS | <u>\$43,794.66</u> |
| EQUITY | |
| Current Year Earnings | \$43,794.66 |
| TOTAL EQUITY | <u>\$43,794.66</u> |



Women's Association South East Melbourne Australia

WASEMA Inc.
 PO Box 140
 31 Douglas Street Noble Park- Vic 3174
 Email: wasema.inc.board@gmail.com
 ABN:81 152 282 818

Statement of Financial Performance

for the period 1st July 2019 to 30th June 2020

| | Notes | 2019-20 |
|--------------------------------|-------|-------------------------|
| Income | | |
| Grant Income | 1 | 155,543.47 |
| Donations | | 2,367.45 |
| Sponsorship | | 500.00 |
| Bank Interest | | 35.23 |
| Total Income | | 158,446.15 |
| Expense | | |
| Audit Fees | | 1,000.00 |
| Advertising & Marketing | 2 | 9,000.00 |
| Catering & Refreshment | | 1,630.18 |
| Counselling Services | | 1,356.25 |
| Contingency Expenses | 3 | 4,822.00 |
| Depreciation | 4 | 8,537.36 |
| Induction | | 5,155.77 |
| Insurance | | 1,719.87 |
| Materials & Other Expenses | 5 | 6,998.11 |
| P O Box Expenses | | 306.98 |
| Printing & Stationery | 6 | 4,614.95 |
| Subscriptions & Membership | 7 | 631.33 |
| Training Expenses | 8 | 4,825.00 |
| Venue Hire | 5 | 1,879.81 |
| Volunteer Expenses | 9 | 2,000.00 |
| Wages - Contracted Staff | 5 | 58,260.86 |
| Work Cover | | 1,913.02 |
| Total Expense | | 114,651.49 |
| Net Surplus / (Deficit) | | <u>43,794.66</u> |



Notes to Accounts July 2019 to June 2020

1. Statement of Accounting Policies

This financial report is a special purpose financial report as WASEMA is not a reporting entity and is prepared in accordance with the financial reporting requirements of the Associations Incorporation Reform Act 2012 and the following Australian Accounting Standards.

AASB 108 - Accounting Policies, Changes in Accounting Estimates and Errors

AASB 110 - Events occurring after Balance Sheet Date

AASB 1031 - Materiality

No other applicable Accounting Standards, Australian Accounting Interpretations or other authoritative pronouncements of the Australian Accounting Standards Board have been applied.

The financial report has been prepared on an accruals basis and is based on historical cost and does not take into account changing money values.

The following material accounting policies have been adopted in the preparation of this financial report.

(a) Assets

The depreciable amount of the assets are depreciated on a straight-line basis over the useful life of the assets. Assets purchased after the 12th of March have been fully written off.

(b) Income Tax

The organisation is self-assessed as exempt from payment of income tax.

2 Grant Income

| | |
|--|------------|
| Muster Grant | 147,800.00 |
| DSS Grant | 5,000.00 |
| City of Casey - Quick Response Grant | 946.00 |
| City of Casey - Operational Grant | 947.47 |
| City of Casey - Equipment & Training Grant | 850.00 |

155,543.47

3 Advertising & Marketing

| | |
|---------------|-----------------|
| Advertisement | 1,000.00 |
| Marketing | 8,000.00 |
| | 9,000.00 |

4 Contingency Expenses

This expense included payments for workers that was not initially budgeted.

5 Depreciation

Depreciation on computers and audio equipment purchased during the year.



a place of welcome and friendship

Women's Association South East Melbourne Australia

WASEMA Inc.
PO Box 140
31 Douglas Street Noble Park- Vic 3174
Email: wasema.inc.board@gmail.com
ABN:81 152 282 818

**Notes to Accounts
July 2019 to June 2020**

6 Materials & Other, Venue Hire & Wages

| | Wages | Venue Hire | Material & Other Exp |
|----------------------------|------------------|-------------------|---------------------------------|
| Café 1 - Cockatoo | 4,346.00 | - | 114.69 |
| Café 2 - Endeavour Hills | 3,995.25 | 604.54 | 170.22 |
| Café 3 - North | 4,372.50 | 408.00 | 485.52 |
| Café 4 - Springvale | 4,160.50 | - | 493.63 |
| Café 5 - Wellsprings | 4,452.00 | 640.00 | 434.05 |
| Café 6 - Bridgewood | 3,776.25 | - | 100.00 |
| Café 7 - Strathaird | 3,723.25 | 95.45 | 100.00 |
| Cafe 8 | 1,391.25 | - | - |
| Café 9 | 993.75 | - | - |
| Total Café Expenses | 31,210.75 | 1,747.99 | 1,898.11 |
| Office Admin | 3,193.25 | - | - |
| Bookkeeper | 3,860.00 | - | - |
| Project Officer | 19,996.86 | - | 100.00 |
| Meeting Venue Hire | - | 131.82 | - |
| Craft Kits & Tools | - | - | 5,000.00 |
| Total | 58,260.86 | 1,879.81 | 6,998.11 |

7 Printing & Stationery

| | |
|------------------------------|-----------------|
| Office Supplies & Stationery | 4,096.05 |
| Printing | 518.90 |
| Total | 4,614.95 |

8 Subscriptions, Memberships & Other Fees

| | |
|--------------------------------|---------------|
| Incorporation & Admin Fees | 185.10 |
| Subscription & Memberships | 425.24 |
| Virtual Communication Platform | 20.99 |
| Total | 631.33 |

9 Training Expenses

| | |
|------------------------------------|-----------------|
| Mental Health & Wellbeing Training | 500.00 |
| Other Training | 4,175.00 |
| Volunteer Training | 150.00 |
| Total | 4,825.00 |

10 Volunteer Expenses

| | |
|--------------------|-----------------|
| Fuel/Travel Cards | 1,500.00 |
| Volunteer Expenses | 500.00 |
| Total | 2,000.00 |

WASEMA's Demographics

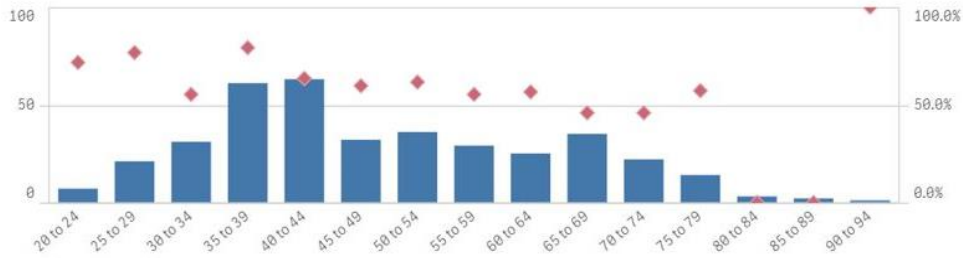


FIGURE 6 WASEMA PARTICIPANTS BY AGE

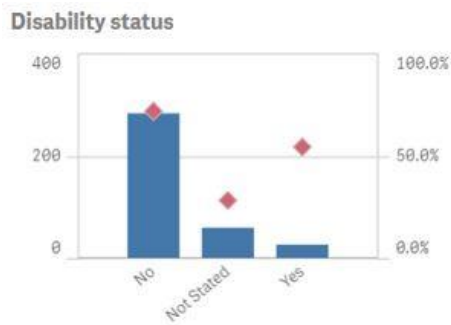


FIGURE 6 WASEMA PARTICIPANTS DISABILITY STATUS

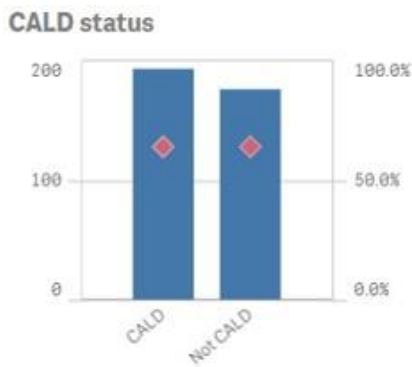


FIGURE 6 WASEMA PARTICIPANTS CALD STATUS

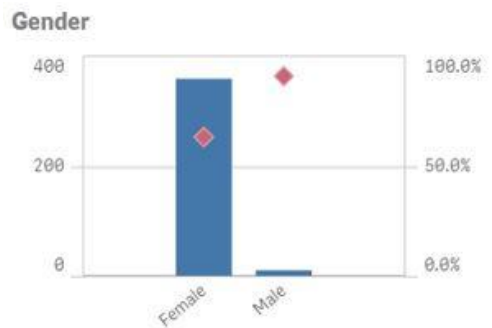


FIGURE 6 WASEMA PARTICIPANTS BY GENDER

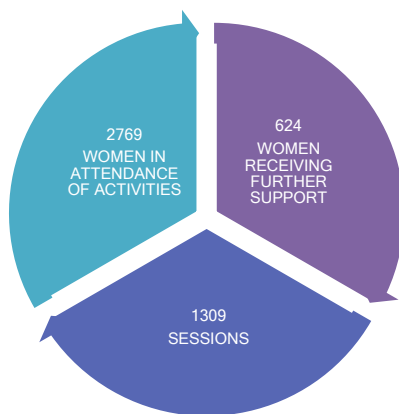


FIGURE 6 WASEMA NUMBERS

WASEMA Inc. ACTIVITIES 2019 – 2020

WASEMA FRIENDSHIP CAFE

City of Greater Dandenong

Springvale WASEMA Friendship Café



Wasema Friendship Café Sessions
Every Tuesday 10:00Am To 12 Pm
During School Term
Springvale Neighbourhood House
46-50 Queens Ave, Springvale Vic 3171
Phone: (03) 9548 3972



Facilitator: Sahar Aghazadeh



FIGURE 7 INFORMATION SESSION AT SPRINGVALE
WASEMA FRIENDSHIP CAFE

Sahar was born in Iran. She graduated from the University of Alzahra with a bachelor's degree in microbiology. Early lessons in resilience as a migrant came from overcoming cultural and language barriers to develop the confidence and make her mark in Australia despite the obvious differences.

She has worked as a community support worker, through her work in the community sector, she has gained experience about families from CALD background who faced difficulties in the community. Sahar believes that empowerment of women is the main principle for building the cohesive and resilient communities.

Sahar can speak Farsi, Turkish and English.

North Dandenong WASEMA Friendship Café



Wasema Friendship Café Sessions
Every Wednesday From 10:00 Am To 12 Pm
During School Term
North Dandenong Neighbourhood House
Deakin Hall, 41 Menzies Avenue And
Lathan Cres. North Dandenong
Phone: (03) 9548 3972



Facilitator: Nika Suwarsih



FIGURE 9 INFORMATION SESSION AT
NORTH DANDENONG WASEMA
FRIENDSHIP CAFE

The North Dandenong WASEMA Friendship Café provide information sessions in a range of topics such as parenting workshops, groups counselling, stress management, cooking classes, job information sessions, tax information sessions as well as providing a place where women can just come to spend a couple of hours amongst friends.

For more than 10 years Nika has helped many migrant mothers and their children feel at home in Australia through diligent and creative work with multicultural women's programs in South Eastern Melbourne.

Nika holds a degree in Psychology from the University of Indonesia and a certificate in Children's Services and Counselling.

Nika is a well known and loved leader in Dandenong. Nika also is a member of the Victorian Multicultural Commission Advisory Council and a recipient of 2018 Premier's Volunteer Champions Awards in the leadership category

Nika is a Producer, Singer Zumba Instructor and Laughter Therapy Facilitator.

Nika is an Ambassador of GYMHA, Global Youth Mental Health Awareness. Humanitarian of Global Goodwill Ambassador.



FIGURE 9 INTERNATIONAL WOMEN'S DAY CELEBRATION AT NORTH DANDENONG WASEMA FRIENDSHIP CAFE

Wellsprings WASEMA Friendship Café



Wasema Frindship Café Sessions
Every Thursday 10 Am Till 12 Pm
During School Term
Wellsprings For Women
79 Langhorne St. Dandenong Vic 3175
Phone: (03) 9701 3740



Facilitator: Shazia Khanum

The Wellsprings WASEMA Friendship Café was established on October 10th, 2019 and since then a total of twenty-six sessions have been carried out. Due to COVID-19 restrictions all WASEMA Friendships Café run a virtual platform through Zoom technology. The Café's main objective is to build community resilience, increasing the ability of local women who are isolated and marginalized and empower them to identify practical solutions to their issues and to enhance their wellbeing. The Wellsprings WASEMA Friendship Café offers free program where women belonging to all cultural backgrounds, ages, and abilities are welcome.

Shazia has extensive international experience in community projects having held positions at the IPEC- International Project on the Elimination of Child Labour in the Carpet Industry in Pakistan. Shazia assessed the needs of child laborers and their families, as well as at the UNDP/ United Nations Development Fund for Women (UNIFEM), managing projects in the fields of Gender Mainstreaming and gender equality in Pakistan. Shazia is also an experienced trainer, working with community leaders on community engagement, communication, and motivation skills.

Shazia worked with Civil Society Human and Institutional Development Program (CHIP), Implementing the Human and Institutional Development (HID) Program for the organizational development of twenty+ partner CBOs (community-Based Organizations).

Shazia holds a Dual Diploma of Community Development (CHC52115) and Community Services (CHC52015) form SLAZ and a master's degree in Social Work form the University of the Punjab



FIGURE 11 TRAINING SESSION AT WELLSPRINGS WASEMA FRIENDSHIP CAFE



FIGURE 11 JEWELLERY MAKING SESSION AT WELLSPRINGS WASEMA FRIENDSHIP CAFE

City of Casey

Endeavour Hills WASEMA Friendship Café



Wasema Friendship Café Sessions
Every Tuesday From 10:00 Am To 12 Pm
During School Term
Endeavour Hills Neighbourhood Centre
10 Raymond McMahon Boulevard
Endeavour Hills 3802
Phone:(03) 9700 3789



Facilitator: Sarah Romp



FIGURE 12 CARD MAKING SESSION AT ENDEAVOUR HILLS WASEMA FRIENDSHIP CAFE

Endeavour Hills WASEMA Friendship Café is based on the values of coffee and conversation, here you are always greeted with a smile, cuppa, and a friend.

Our regular participants have commented on how warm and welcoming the café is. Sarah provides the Women with a safe and comfortable environment and is able to maintain an open and honest communication with the women in her group. They come from strong and diverse backgrounds that have a story or two to tell and are happy to share.

Endeavour Hills WASEMA Friendship Café participants have been in the area for decades and can tell you how Endeavour Hills has grown. Most have migrated to Australia over thirty years ago and speak English well. EHWFC has around fifteen members that consist of retired or senior citizens that enjoy the social aspect of the Friendship café.

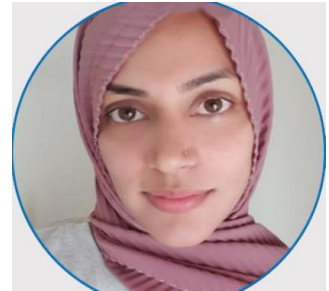
Some of the activities that the participants enjoy are card making, cross stitching and mindful colouring in.

Sarah Romp helped write a grant proposal for Digital Skills for Seniors, which was accepted, and looks forward to teaching the Digital Skills program to her group as most have been struggling to keep up with technology.

Strathaird WASEMA Friendship Café



Wasema Friendship Café Sessions
Every Wednesday From 10:00 Am To 12 Pm
During School Term
Strathaird Children's Centre
106-108 Strathaird Drive, Narre Warren South VIC 3805
Phone (03) 8790 3799



Facilitator: Milana Mansoor

Strathaird WASEMA Friendship Cafe started in February 2020, since its inception the program attracts on average ten to twelve participants per week. With the Covid-19 restrictions the program is now run via zoom sessions and virtual calls.

Strathaird WASEMA Friendship Café holds weekly sessions with different topics with a range of guest speakers.

Strathaird WASEMA Friendship Café provides free mentoring, support, Counselling, trainings, art and crafts, Information sessions, activities and referrals for women who are in need via different agencies.

Milana was born in Sri Lanka, having migrated to Australia in 2009, Milana is proud to call myself a mother, Milana has two daughters age seven and four.

Milana's ambition is to become a police officer.

Milana holds a Diploma of Community services and have joined WASEMA in Jan 2020 as community Development Worker responsible for Strathaird WASEMA Friendship Café, a job she truly loves specially the close contact with the local community.



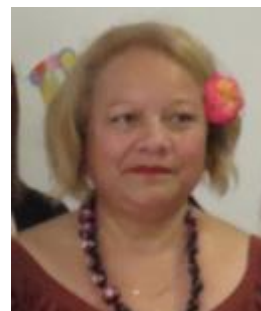
FIGURE 13 STRATHAIRD WASEMA FRIENDSHIP CAFE LAUNCH DAY

Shire of Cardinia

Bridgewood WASEMA Friendship Café (Our Place) Primary School



Wasema Friendship Café Sessions
Every Tuesday From 10:00 Am To 12 Pm
During School Term
Bridgewood "Our Place" Primary School
OSH Club, 115 Bridge Road, Officer VIC 3809
Phone: (03) 9548 3972



Facilitator: Susi Tevaseu

In response to COVID-19 isolation measures, Wellbeing Tele Outreach Sessions were carried out to assess immediate impact of the Coronavirus Pandemic on the participants and their families.

Psychological First Aid was provided to stressed participants, members were constantly updated pertaining to COVID-19 information via emails and WhatsApp.

Customized information, advice, and referrals were provided, members were linked to appropriate services to address the challenges impacting on their families' social, economic, emotional, and general wellbeing;

Referrals were sent to Centrelink, South East Community Links for Women Inc. Australian Red Cross and other services to support vulnerable participants in crisis

Bridgewood WASEMA Friendship Café open on the 4th February 2020 and officially launched on the 18th February 2020 by guest speaker the Honourable Mr. Jason Wood MP Assistant Minister for Customs, Community Safety and Multicultural Affairs.

Bridgewood WASEMA Friendship Café offer free programs and service's delivery to the community, the Café objective is to foster resilience through increasing the ability of local women include isolated and marginalized and to empower them to identify practical solutions for their issues and to improve their wellbeing.

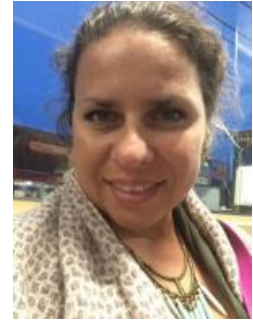


FIGURE 14 BRIDGEWOOD WASEMA FRIENDSHIP CAFE LAUNCH DAY

Cockatoo WASEMA Friendship Café



Wasema Frindship Café Sessions
Every Wednesday 10:00 Am To 12 Pm
During School Term
Cockatoo Community House
23 Bailey Road - Cockatoo Vic 378
Phone: 03 5968 9031



Facilitator: Marta Slawuta



FIGURE 15 WOMEN'S GATHERING

AT COCKATOO WASEMA FRIENDSHIP CAFE

Marta Slawuta is Cockatoo Wasema Friendship Café facilitator, she holds a master's degree in physical education and Health from Poland and a Bachelor of Environmental Science from Manchester Metropolitan in United Kingdom.

Martha's passions include: the need to help others, sport and environment. She loves to empower and inspire people to become better versions of themselves. Marta spends her free time volunteering with women groups, coaching volleyball athletes and saving the environment. She lives on a hobby farm in Gembrook with her husband and lots of animals.

Wasema Friendship Café (WFC) in Cockatoo opened its doors in October 2019 and was a huge success. We run weekly sessions on Wednesday mornings in Cockatoo Community House. During our meetings I came across many women from different walks of life. Even though we are all different due to our cultural backgrounds, language barriers, religion or home situation we find the way to live in harmony. I offer my friendship, assistance and support to empower women and foster connectedness and inclusion in the Cardinia Shire.

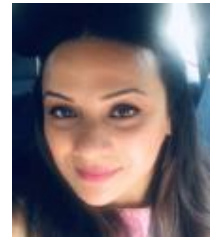
In order to spread the word about WFC and gain higher numbers of participants, group of volunteers and I had visited local markets in Emerald, Cockatoo and Gembrook. This year I have organised the vision board session as well as special Evening Edition of WFC.

On both occasions special guest were invited to share their expertise, knowledge and skills with Cockatoo community members. We have received very positive feedback and were encouraged to run more events alike. Due to the national pandemic of COVID-19, Cockatoo group was no longer allowed to meet face to face, therefore on the 25th of March, for the first time, WFC was contacting its members via virtual platforms and phone calls. Zoom meetings and WhatsApp groups became the new normal, and the only way to stay in touch with our participants, family and friends. During this difficult time in the history of the world, Wasema required fast action and when our participants needed us the most, we were there for them.

Emerald WASEMA Friendship Café



Wasema Frindship Café Sessions
Every Thursday 10:00 Am To 12 Pm
During School Term
Emerald Community House
356-358 Belgrave-Gembrook Road
Emerald Victoria 3782
Phone: 03 5968 3881



Facilitator: Saraf Mahiat

OPENING

Saraf Mahiat was born and raised in Bangladesh. In Australia Saraf studied Economics and Finance at RMIT University after a stint working in finance sector, Saraf got involved in the community sector as a volunteer when she completed the community leadership course jointly offered by Cardinia Shire council and Leadership Victoria. Besides working in finance planning Saraf undertakes the role of Community development Worker at Emerald WASEMA Friendship Café, which is scheduled to open in August 2020.

Saraf loves working in community as she grew up in a household, where kindness, empathy, compassion, helping others were quite a common occurrence. Saraf believes that a cohesive society is the foundation of a kind and sustainable world.

WASEMA Inc. Monthly Networking Meetings

Since the beginning of 2018, WASEMA has been hosting monthly onsite Networking Meetings at Springvale Learning and Activities Centre on the last Friday of each month, from 19.00-21.00 (prior COVID-19 restrictions).

These meetings gave the opportunity to both seasoned and emerging community leaders to engage in meaningful conversations about the challenges their communities face at any given time and to access information, referral pathways, services or collaborative stakeholders that could possibly assist them in addressing their concerns and to find a remedy for their issues through either direct questions, requested feedback, collaborations and/or partnerships.. The sessions comprise of one or two guest speakers followed by question time and network opportunities.

Presentations were conducted by:

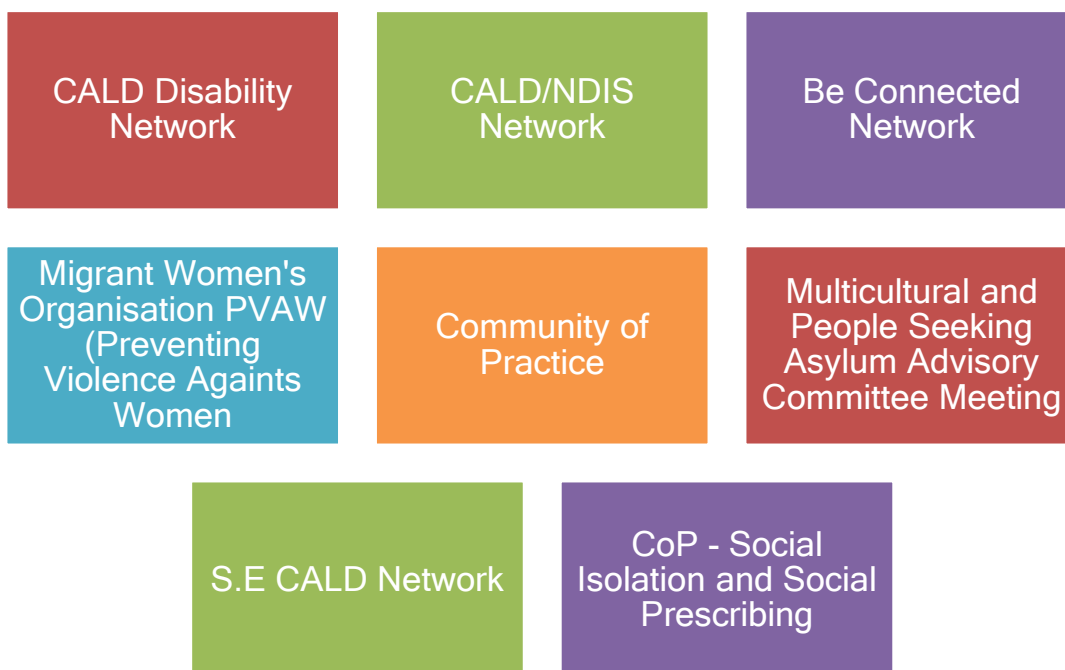
- ❖ Migrant Workers Centre
- ❖ Ethnic Communities' Council of Victoria
- ❖ Latrobe Community Health Services
- ❖ NDIS Early Childhood
- ❖ Victoria Police
- ❖ Brotherhood of St. Laurence - Stepping Stones Program
- ❖ Australian Red Cross
- ❖ The Water Well Project
- ❖ Breast Screen Victoria
- ❖ Monash University - Research Department
- ❖ Three Sides of the Coin (Gambling)
- ❖ Chisholm Institute
- ❖ Casey Community Solutions



FIGURE 16 WASEMA 25TH NETWORK MEETING SESSION

WASEMA Inc. Network Participation

WASEMA engages in a number of Networks and Advisory Committees in the City of Greater Dandenong, the Shire of Cardinia and the City of Casey. WASEMA brings forward to those meetings concerns and issues raised at grassroots level by the participants of WASEMA Friendships Cafes, thus giving voice to an otherwise silent and unchallenged problem.



WASEMA Inc. Advisory Participation & Memberships

WASEMA members are engaged with a number of organizations in a variety of capacities, exchanging information and resources that can be shared with the communities we work with across the South East. Those affiliations make the work we do be seen by the Melbourne communities at large helping us share the lessons and experiences we have acquired along the way.



WASEMA Inc. Specialized Training

The importance of training cannot be overemphasized, and WASEMA recognising the significance of training which reflects in increased engagement, consistency, improved productivity and performance, shared responsibility and awareness of one's role in a team and personal growth; has given training opportunities to all WASEMA participants in different ways and methods.

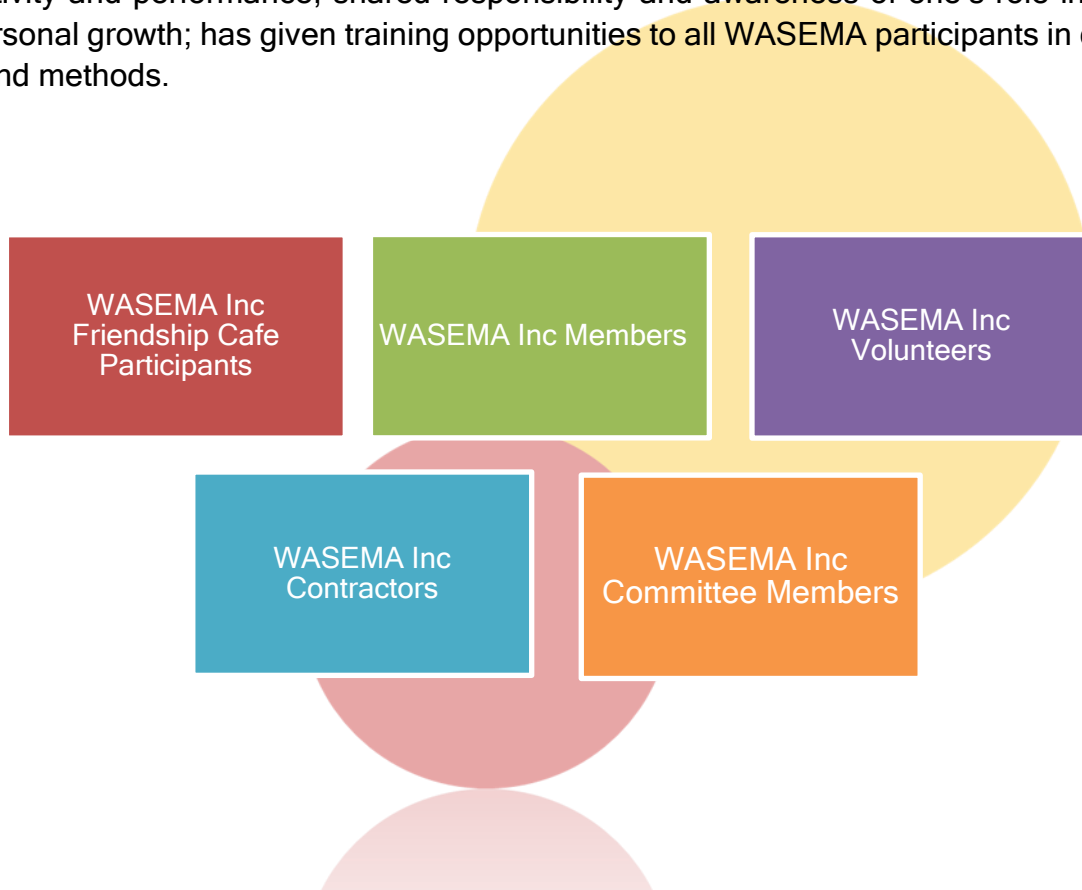


FIGURE 17 WASEMA TRAINING SESSION

WASEMA Inc. Specialized Training for Staff and Volunteers

WASEMA promotes specialised training to particular members in order to reduce risk, promote solidarity within the team, bolster morale, improve productivity and performance and promote accurate time management which has proven to provide a better-quality outcome for our projects.

CALD Governance Project with Justice Connect and Springvale Neighborhood House for Members

WASEMA Inc Friendship Cafes for Contractors

DEX (Data Exchange) for Contractors



FIGURE 18 WASEMA SPECIALISED TRAINING FOR VOLUNTEERS AND CONTRACTORS

WASEMA Inc. Family Violence Advisory Committee

A spike in the recording of family violence incidents experienced by participants of the WASEMA Friendship Cafes over the past several months of the COVID-19 pandemic led WASEMA to recognise that staff, volunteers and associates required specialised training / awareness in relation to understanding "cues" from the victims, in order to safely assist them and refer them to specialised services.

WASEMA undertook the initiative to organise a Family Violence Advisory Committee which conducts discussions regarding awareness, prevention, referral process/es, access and availability of services, victim support, perpetrator rehabilitation/integration, available training opportunities to organisations and/or individuals regarding family violence in South East Melbourne and has partnered with the following organisations to further this effort:

- ❖ Victoria Police Southern Metro Region
- ❖ Uniting
- ❖ Multicultural Centre for Women's Health - PVAW (Prevention of Violence Against Women)
- ❖ InTouch - Multicultural Centre Against Family Violence
- ❖ WHISE - Women's Health in the South East
- ❖ Springvale Monash Legal Service Inc.
- ❖ Wellsprings for Women
- ❖ Enliven - Enhancing Social Health
- ❖ Monash University - Forced Marriage Research

WASEMA Inc. Training for the Afghan Community

WASEMA provided specialized training for the Afghan Community in the months of January and February, the swimming project consisted of a program of twelve weeks for fifteen women taking part. However, the project was blown out to something much greater because of the enthusiastic uptake by Afghan women. (sixty-nine women took part with many more on waiting list). The program built the women's confidence in the swimming pool, leading to further participation in swimming activities with an increased feeling of confidence and readiness to seek further training, study and work opportunities. WASEMA training for the Afghan community was a joint project that counted with funding from South Migrant and Refugee Centre (SMRC) Uniting and Komak Program

Introduction to
Swimming -
Catholic Care

Completion
Celebration -
Catholic Care

Safe Food
Handling -
Selendra
Community Hub

Employment in the
Cleaning Industry -
Selendra
Community Hub

First Aid
Certificate -
Lynbrook
Community Centre



FIGURE 19 WATER SAFE PROGRAM FOR THE AFGHAN WOMEN

WASEMA Inc. Participation in Community Consultations

WASEMA has a keen interest in both present and future outcomes for the community it serves, and participates in consultation processes, from which Council gathers information to make decisions that impact our community. WASEMA is committed to participating in meaningful consultation with Council and remains informed and engaged, as we recognise that consultations play an important role in governance and influence civic life.

City of Greater Dandenong

| | | |
|--|---|--|
| My Springvale Community Precinct Plan Submission | Feedback on Greater Dandenong Climate Change Strategy | Keysborough South Community Hub |
| CGD - Services Consultation | CGD Open Space Strategy | WHISE and Regional Prevention of Violence Strategy - Community Forum |

City of Casey

| | |
|--|--|
| Casey Cardinia Community of Practice Panel | Cranbourne & District Community Services Group (CDCSG) |
|--|--|

Shire of Cardinia

| | | |
|---|--|---|
| Multicultural Hub Feasibility Study for Shire of Cardinia | Multicultural Hub in Cardinia - Share your ideas | Launch of Cardinia Shire's Social and Affordable Housing Strategy |
|---|--|---|

WASEMA Inc. Advocacy

WASEMA undertakes advocacy work on behalf of the communities and stakeholders we serve.

Safe, Affordable Housing
for All

Joint Statement GEN
VIC

Gender Equity Victoria

WASEMA Inc. Placement Partnerships

Wasema offers placements for students undertaking community work related studies.

ITHEA - Institute of Tertiary & Higher
Education Australia

WASEMA Inc. Participation in Events, Exhibitions, Expos, Festivals & Forums

WASEMA forms an integral part of the communities we work in and the women we represent, the organisation participates and organises events, festivals and forums that reflect our values.

| | | | |
|---|---|--|---|
| International Women's Day | Harmony Festival | Multicultural and Families Dinner with AWAFN and Partners | White Ribbon Day |
| International Day for People with Disability | Biggest Morning Tea | Cardinia What does a well-connected community look like? | Dandenong: What does a well-connected community look like? |
| South East Melbourne Entrepreneurs Summit | Refugee & Asylum Seeker Recognition Awards | Springvale Neighborhood House Community Group Leaders' Forum | Wellsprings Multicultural Dinner |
| Women's Mini Expo | Rotary Club of Springvale City - Fund Raising Night | Social Prescription | Multicultural Advisory Forum (MAF) |
| Wellsprings for Women 25th Anniversary Dinner | Ageing Positively Festival | NDIS and Mental Health Forum | Palm Sunday Walk for Refugees |
| COVID-19 Community Services Digital Forum | Indonesian Festival | Maeva NUI Victoria 2019 | Creating Respect Together: Annual Think Tank Preventing Violence Together |
| Unity in Diversity SMRC | COVID-19 Community Inclusion Forum | Pathways to Better Living Expo | Water Safety Beach Day CALD Program |
| | WASEMA End of Year Celebration | Virtual Eid Party & Cultural Harmony | |

WASEMA Inc. Information Sessions

WASEMA organizes a series of information sessions for both WASEMA Friendship Café or WASEMA Network Meetings, those sessions have proved to address and provide the needed information and access to services requested by the community we serve, opening up a window of information to our stakeholders, that is the women in the south east of Melbourne.

| | | | | |
|---|--|--|---|--|
| Australian Red Cross Emergency Preparedness and Engagement | Community Tax Education | Migrant Workers Centre | Breast Screen Victoria | Moving for Life Training |
| Visa Information Session | African Youth and Family Camp | Victoria Police | The Water Well Project | Firmer Foundations: Let's Talk About Money |
| Women's Money Wellness | Three Sides of the Coin | Become a Learning Ambassador | Link HC NDIS Early Childhood Early Intervention | Adapt, adapt, adapt - Do remote governance well |
| Legal Aid | Gambling in CALD communities - South East Community Links - SECL | Fire Safety Talks | AMCS - Moving for Life | ATO Migrant Education Webinars |
| Latrobe Community Health Services | Ethnic Communities' Council of Victoria | Casey Community Solutions | NDIS Awareness Project | ATAC Webinar: Keeping Employees Informed and Connected During a Crisis |
| The Shelter-in-Place Volunteer: Don't Let Your Supporters Get Sidelined by COVID-19 | Good Things Foundation - Network Partner Skill share | Brotherhood of St. Lawrence - Centrelink Session | Dandenong Library - ATO Information Session | Parent zone - Anglicare |
| | Brotherhood of St. Lawrence - Stepping Stones Program | Consumer Affairs Victoria | Chisholm Pathway Information | |

Training and Workshops (Third Party)

WASEMA partner with a number of organisations in the south east to provide a range of training opportunities that benefit and meet the needs of the communities we serve.





WASEMA Inc. in the Community



FIGURE 23 WELLSPRINGS FOR WOMEN FUNDRAISING



FIGURE 20 INDONESIA FESTIVAL



FIGURE 23 SPEED DATE A MUSLIM WITH HANA ASSAFIRI AT WELLSPRINGS FOR WOMEN



FIGURE 23 WOMEN'S GATHERING IN CLAYTON



FIGURE 24 WASEMA FRIENDSHIP CAFE SESSION AT SPRINGVALE NEIGHBOURHOOD HOUSE

Looking Ahead

For the organisation's longevity WASEMA will concentrate resources and efforts in the following areas:

- ❖ Good governance
- ❖ Integrity
- ❖ Planning
- ❖ Risk management

- WASEMA is committed to robust internal governance, maintaining integrity in our culture and processes, good financial management, purposeful strategic planning for priority setting, and effectively planning and managing risks.
- Measurable, accountable actions ensure that we remain focused, with performance against key results monitored by our Board and MUSTER Grant Committee on a quarterly basis, to assess what we have achieved and the impact we have on our participants.
- Results will be used to strengthen our activities and continuously improve our performance and to inform future decision making for new and emerging projects